



Finale[®] 150



HERBICIDE

- ✓ Can be used for preparing sports turf for line-marking.
- ✓ Effective control of field horsetail (*Equisetum arvense*) and creeping thistle (*Cirsium arvense*).

FINALE 150

A foliar contact herbicide for use as a band application to:
Fence lines. Spray applications must be made within 50 cm of fence line,
Managed amenity turf for line-marking preparation.

FINALE 150 may also be used as a band or spot application to:
Natural surfaces not intended to bear vegetation,
Permeable surfaces overlaying soils,
Hard surfaces.

MAPP 16733

A soluble concentrate formulation containing 150 g/l (13.52% w/w) glufosinate-ammonium.

5 L e

GB81764182C - RA4c - ARTICLE 81686777

Foliar contact herbicide



PIERWOOD

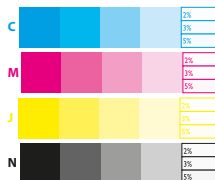
Parc du Châter - 33, rue Bélißen
69340 Francheville
+33(0) 4 72 50 12 20

Ref. Pierwood / No. Folder : 160917
Date : 13/09/2016
Modif. 1 :-
Op. : AL

Client / Customer : BES FRANCE Contact : Laurent Fontaine
Code Article / Article Code : 81686777
Code Emballage / Packaging Code : GB81764182C
Fichier / File : Finale SL 150_SL_GB81764182C
Plan / Dieline : 9821A

- PDF BD lecture / Review LD PDF
- Fichier Prépresse HD / HD Preprint Artwork
- Fichiers ArtPro en PJ / ArtPro file attachment

Couleurs Imprimées / Printed Colors :



Autres Couleurs / Other Colors :

Plan / Dieline



SAFETY PRECAUTIONS

Operator Protection

Engineering control of operator exposure must be used where reasonably practicable in addition to the following personal protective equipment: WEAR SUITABLE PROTECTIVE CLOTHING (COVERALLS), SUITABLE PROTECTIVE GLOVES AND FACE PROTECTION (FACESHIELD) when handling the concentrate. WEAR SUITABLE PROTECTIVE CLOTHING (COVERALLS) AND SUITABLE PROTECTIVE GLOVES when handling contaminated surfaces or applying by hand-help equipment. WEAR SUITABLE PROTECTIVE CLOTHING (COVERALLS) when applying by vehicle-mounted or trailed equipment. However, engineering controls may replace personal protective equipment if a COSHH assessment shows they provide an equal or higher standard of protection. TAKE OFF IMMEDIATELY all contaminated clothing. WHEN USING DO NOT EAT, DRINK OR SMOKE. WASH CONCENTRATE from skin or eyes immediately. AVOID ALL CONTACT WITH SKIN, EYES AND MOUTH. DO NOT BREATHE SPRAY. WASH HANDS AND EXPOSED SKIN before eating and drinking and after work. IF YOU FEEL UNWELL, seek medical advice (show the label where possible).

Environmental Protection




DO NOT CONTAMINATE WATER with the product or its container.
 RISK TO NON-TARGET INSECTS OR OTHER ARTHROPODS. For advice on risk management see Directions for use.
 To protect terrestrial non target plants respect a well determined unsprayed buffer zone to non-agricultural land.

Storage and Disposal

KEEP AWAY FROM FOOD, DRINK AND ANIMAL FEEDING STUFFS.
 KEEP OUT OF REACH OF CHILDREN.
 KEEP IN ORIGINAL CONTAINER, tightly closed, in a safe place.
 WASH OUT CONTAINER THOROUGHLY, empty washings into spray tank and dispose of safely.
 DO NOT RE-USE THIS CONTAINER for any purpose.

Safety information

FINALE 150
 A soluble concentrate formulation containing 150 g/l (13.52% w/w) glufosinate-ammonium.

Danger.

Harmful if swallowed. Toxic in contact with skin. Causes serious eye damage. May damage fertility. Suspected of damaging the unborn child. May cause damage to organs (nervous system) through prolonged or repeated exposure if swallowed. Obtain special instructions before use. Use personal protective equipment as required. IF exposed or concerned: Get medical advice/attention. IF IN EYES: Rinse cautiously with water for several minutes. Remove contact lenses, if present and easy to do. Continue rinsing. Dispose of contents/container to a licensed hazardous-waste disposal contractor or collection site except for empty clean containers which can be disposed of as non-hazardous waste.
 To avoid risks to human health and the environment, comply with the instructions for use.

IMPORTANT INFORMATION : Restricted to professional users FOR USE ONLY AS AN AMENITY HERBICIDE.	
Crops/situations	Managed amenity turf (line marking preparation) and on natural surfaces not intended to bear vegetation, permeable surfaces overlaying soils and hard surfaces.
Maximum individual dose	5.0 L product/ha, dependent on use.
Maximum number of treatments	2 per crop
Other Specific Restrictions	This product must be applied only between 1st March and 30th September.
	Livestock must be kept out of treated areas until poisonous weeds such as ragwort have died and become unpalatable.
	Only use as a band or spot application at rates not exceeding 750 g active substance/ha (treated surface) per application and maximum two applications per year.
	Applications must be made using low drift nozzles and/or spray shields.
	Applications must not be made to railway ballasts.
	The container must not be re-used for any purpose.
READ THE LABEL BEFORE USE. USING THIS PRODUCT IN A MANNER THAT IS INCONSISTENT WITH THE LABEL MAY BE AN OFFENCE. FOLLOW THE CODE OF PRACTICE FOR USING PLANT PROTECTION PRODUCTS	

PROTECT FROM FROST

DIRECTIONS FOR USE

IMPORTANT: This information is approved as part of the Product Label.
All instructions within this section must be read carefully in order to obtain safe and successful use of this product.

GENERAL INFORMATION

Weed Control.

A non-selective herbicide, which acts mainly by contact but some translaminar movement can occur within aerial plant parts.
FINALE 150 kills all green tissue but does not harm mature bark. Deep-rooted perennial weeds will regrow. FINALE 150 controls grasses and broad-leaved weeds. A foliar contact herbicide for use as a band application to: Fence lines. Spray applications must be made within 50 cm of fence line. Managed amenity turf for line-marking preparation, and as a band or spot application to: Natural surfaces not intended to bear vegetation, Permeable surfaces overlaying soils, Hard surfaces.

RESTRICTIONS

Application of FINALE 150 on hard surfaces:

Apply this product carefully.

Ensure spraying takes place only when weeds are actively growing (normally March to September) and is confined only to visible weeds including those in the 30cm swath covering the kerb edge and road gully – do not overspray drains.

Application

Must only be applied using low drift nozzles and/or sprayshields.

Weather

DO NOT spray if rain is imminent or likely within 6 hours of application and DO NOT apply to wet foliage if run off is likely to occur.

Drift

Avoid drift to areas outside those being sprayed, having due regard to the prevailing weather conditions, wind direction and spray quality being used.

Soils

FINALE 150 is degraded after contact with the soil.

Do not spray at end of season on sandy soil.

WEEDS CONTROLLED

FINALE 150 will control grass and broad-leaved weeds. FINALE[®] 150 controls a wide range of annual and perennial weeds including the following:
Established annual broad-leaved weeds at 3 l/ha

Annual Mercury (*Mercurialis annua*)
Annual Milk or Sow-thistle (*Sonchus asper*)
Black-bindweed (*Bilberdykia convolvulus*)
Black Nightshade (*Solanum nigrum*)
Charlock (*Sinapis arvensis*)
Cleavers (*Galium aparine*)
Common Chickweed (*Stellaria media*)
Common Hemp-nettle (*Galeopsis tetrahit*)
Common Henbit Dead-nettle (*Lamium amplexicaule*)
Common Orache (*Atriplex patula*)
Corn Buttercup (*Ranunculus arvensis*)
Corn Marigold (*Chrysanthemum segetum*)
Corn Poppy (*Papaver rhoeas*)
Corn Spurrey (*Spergula arvensis*)
Fat Hen (*Chenopodium album*)
Field Penny-cress (*Thlaspi arvense*)
Field Speedwell (*Veronica persicae*)
Forget-me-not (*Myosotis arvensis*)
Fumitory (*Fumaria officinalis*)

Gallant Soldier (*Galinoga parviflora*)
Groundsel (*Senecio vulgaris*)
Ivy-leaved Speedwell (*Veronica hederifolia*)
Knotgrass (*Polygonum aviculare*)
Pale Persicaria (*Polygonum lapathifolium*)
Parsley-piert (*Aphanes arvensis*)
Pineapple weed (*Chamomilla suaveolens*)
Red Dead-nettle (*Lamium purpureum*)
Redshank (*Polygonum persicaria*)
Scarlet Pimpernel (*Anagallis arvensis*)
Scented Mayweed (*Chamomilla recutita*)
Scentless Mayweed (*Matricaria perforata*)
Shepherd's-purse (*Caesella bursa-pastoris*)
Smooth Hawks-beard (*Crepis capillaris*)
Smooth Sow-thistle (*Sonchus oleraceus*)
Spurge (*Euphorbia* spp)
Stinking Chamomile (*Anthemis* spp)
Tare species (*Vicia* spp)
Wild Radish (*Raphanus raphanistrum*)

Established annual broad-leaved weeds at 5.0 l/ha
Small Nettle (*Urtica ureus*)
Volunteer Oilseed Rape (*Brassica napus*)

Established perennial broad-leaved weeds at 5.0 l/ha
Colt's-foot (*Tussilago farfara*)
Common Dandelion (*Taraxacum officinale*)
Corn Mint (*Mentha arvensis*)
Cow Parsley (*Anthriscus sylvestris*)
Creeping Thistle (*Cirsium arvense*)
Curled Dock (*Rumex crispus*)
Field Bindweed (*Convolvulus arvensis*)

Greater Plantain (*Plantago major*)
Hoary Cress (*Cardaria draba*)
Meadow Buttercup (*Ranunculus acris*)
Perennial Nettle (*Urtica dioica*)
Perennial Sow-thistle (*Sonchus arvensis*)
White Clover (*Trifolium repens*)

Established annual grassweeds at 3.0 l/ha
Annual Meadow-grass (*Poa annua*)
Black-grass (*Alopecurus myosuroides*)
Loose Silky-bent (*Apera spica-venti*)

Sterile Brome (*Bromus sterilis*)
Wild oats (*Avena fatua*)

Established annual grassweeds at 5.0 l/ha
Italian Rye-grass (*Lolium multiflorum*)

Established perennial grassweeds at 5.0 l/ha
Black Bent (*Agrostis gigantea*)
Common Couch (*Elymus repens*)

Perennial Rye-grass (*Lolium perenne*)
Rough Meadow-grass (*Poa trivialis*)

Other established weeds at 5.0 l/ha
Field Horsetail (*Equisetum arvense*)

Annual weeds

Annual grasses and broad-leaved weeds are killed by a single application.
FINALE 150 has no residual soil activity and will control only weeds which have emerged at the time of application.

Perennial weeds

Perennial non-rhizomatous grasses (e.g. perennial rye-grass, rough meadow-grass) and broad-leaved weeds are usually well controlled with a single application.
Common couch, docks, nettles and other deep-rooted perennials may require two applications of FINALE 150 for control during the growing season.

Rates of use and timing

Apply when weeds are actively growing between 1st March and 30th September.
For optimum results, apply when weeds have at least 2 expanded leaves and are actively growing

Weed Control

Use as a band application to:
Fence lines. Spray applications must be made within 50 cm of fence line.

and as a band or spot application to:
Natural surfaces not intended to bear vegetation,
Permeable surfaces overlaying soils,
Hard surfaces.

Rates of use and timing

Apply when weeds are actively growing between 1st March and 30th September.
For optimum results, apply when weeds have at least 2 expanded leaves and are actively growing

Application Equipment	Vehicle-mounted hydraulic sprayer		Knapsack Sprayer	
	Rate per hectare	Water per hectare	Rate per 100m ²	Water per 100 m ²
Seedlings of all species. Established annual weeds and grasses as specified in the 'Weeds Controlled' section.	3 litres	200-400 litres	30 ml	4.5 litres
Established annual and perennial weeds and grasses as specified in the 'Weeds Controlled' section.	5 litres	200-400 litres	50 ml	4.5 litres

Band application

Preparing sports-turf for line-marking

Line-marking Application equipment	Line-marking machine with 7.5 cm swath		
Type of line	Finale®150	Water	Coverage in linear metres
To reinforce existing lines (FINALE® 150, 3L/ha)	30 ml 120 ml	4 litres 16 litres	1333 m 5332 m
To create new lines (FINALE® 150, 5L/ha)	50 ml 200 ml	4 litres 16 litres	1333 m 5332 m

Refer to the "Weed Control" section for susceptibility of individual grass species. The reduced dose on existing lines (3 L product/ha) may not give complete kill if re-establishing grasses are beyond the seedling stage.

MIXING

Add the recommended quantity of FINALE 150 to the spray tank half-filled with the required volume of clean water.

Add the remainder of the water with the sprayer agitation system working gently.

Agitate gently before and during spraying.

DO NOT leave the sprayer standing with chemical in it.

On completion of spraying wash out sprayer thoroughly with the addition of a suitable detergent. Dispose of all tank washings in accordance with good stewardship practices.

COMPATIBILITY

All the requirements or restrictions on other product labels must be adhered to when mixing FINALE 150.

Continuous agitation must be maintained.

RESISTANCE

Certain weeds may develop resistance to Bayer CropScience Ltd.'s products.

Since such circumstances are beyond our control, Bayer CropScience will be under no liability for any resulting loss or damage whatsoever.

The (COSHH) Control of Substances Hazardous to Health Regulations may apply to the use of this product at work.

RA4c - FINALE 150 - 5L - GB - GB81764182C

Batch Number :

Bayer

For 24 hour emergency information contact Bayer CropScience Ltd.
Telephone: 0800 220876
or nearest National Poisons Information Centre.

www.environmentalscience.bayer.co.uk for SDS and larger label.

FINALE® 150 is a registered trademark of Bayer.

Bayer CropScience Ltd.,
230 Cambridge Science Park,
Milton Road,
Cambridge,
CB4 0WB.
Telephone: Tel: 00800 1214 9451



Finale[®] 150



HERBICIDE

- ✓ **Can be used for preparing sports turf for line-marking.**
- ✓ **Effective control of field horsetail (*Equisetum arvense*) and creeping thistle (*Cirsium arvense*).**

FINALE 150

A foliar contact herbicide for use as a band application to:
Fence lines. Spray applications must be made within 50 cm of fence line,
Managed amenity turf for line-marking preparation.

FINALE 150 may also be used as a band or spot application to:
Natural surfaces not intended to bear vegetation,
Permeable surfaces overlaying soils,
Hard surfaces.

MAPP 16733

A soluble concentrate formulation containing 150 g/l (13.52% w/w) glufosinate-ammonium.

5 L e

GB81764182C - RA4c - ARTICLE 81686777

Foliar contact herbicide

